

Downloading HP Aplets to an HP 39/40gs Graphing Calculator

This document describes the process for downloading an HP Aplet for the HP 39/40gs graphing calculator from your PC to a physical HP 39/40gs. The document assumes that the HP Aplet files are contained in a single folder on your PC. Also assumed is that you have installed the Connectivity Kit for the HP 39/40gs on your PC.

To download an HP Aplet, go to

<http://h20331.www2.hp.com/Hpsub/cache/392297-0-0-225-121.html>

To download the Connectivity Kit installation file, go to:

<http://h10025.www1.hp.com/ewrf/wc/softwareDownloadIndex?os=228&softwareitem=ca-22414-3&lc=en&dlc=en&cc=us&product=1812522&lang=en>

Here are the steps for loading an HP Aplet onto your HP 39/40gs graphing calculator.

1. Connect the HP 39/40gs to your PC using the mini-USB to USB cable provided with your HP 39/40gs. The mini-USB side connects to the calculator and the USB side connects to your PC.
2. Turn on the HP 39/40gs.
3. Now launch the Connectivity Kit. The application will look for a connection. Your application window should be similar to Figure 1.

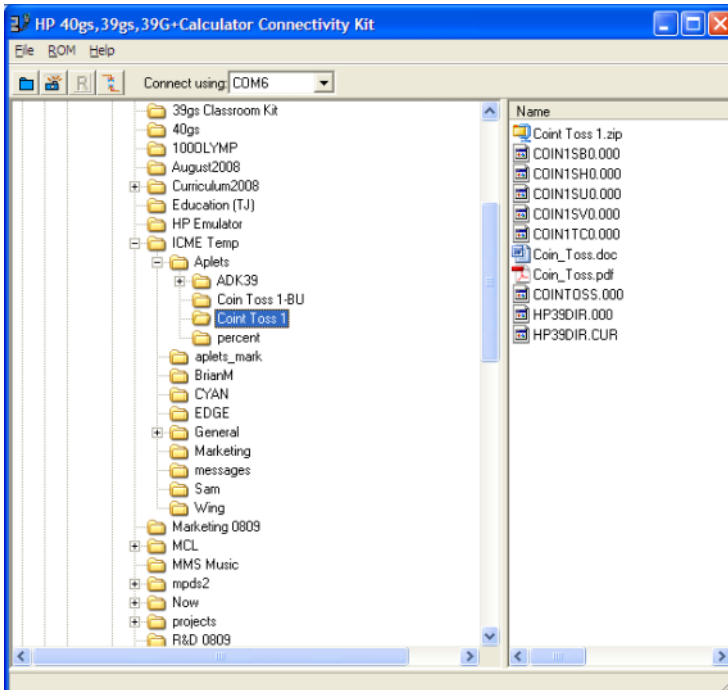


Figure 1

Once the Connectivity Kit connects with the HP 39/40gs graphing calculator, you are ready to load your custom aplets onto the calculator. The application window is split into 2 panes. The left pane is an Explorer-type view of the folders on your PC. The right

pane shows the files in the currently selected folder. In this example, we will transfer the Aplet *Coin Toss 1* from the PC to the HP 39/40gs. Here are the steps:

1. On the Connectivity Kit side, navigate to the HP Aplet you want to transfer. Click on the folder that contains your HP Aplet. Each HP Aplet is contained in its own file folder. In this case, Figure 1 shows that the teacher has opened the *Coin Toss 1* folder. Note on the right side of the application is a list of all the files in that folder.
2. On the HP 39/40gs calculator, press the **Aplet** key and then the **RECV** menu key. From the choose box, select the **USB Disk Drive** option, as shown in Figure 2.

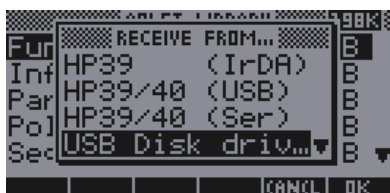


Figure 2



Figure 3

3. Once you press the **OK** menu key, you will see brief messages on the Connectivity Kit side, followed by a choose box on the calculator side (Figure 3). Your intended aplet should be first on the list, followed by an **Other...** option.
4. With your choice highlighted, press the **OK** menu key again and the HP Aplet will begin to transfer to the calculator (Figure 4).
5. When transfer has finished, the new HP Aplet will show up at the top of the Aplet Library, as in Figure 5.



Figure 4



Figure 5

Your new aplet is now ready for use on the HP 39/40gs graphing calculator!