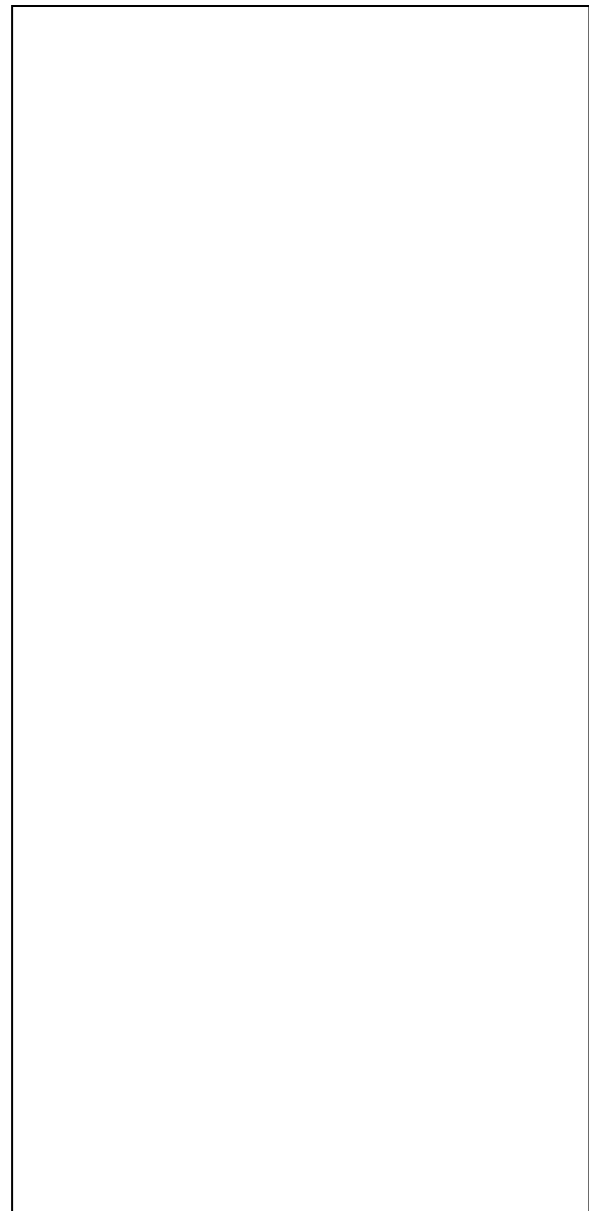
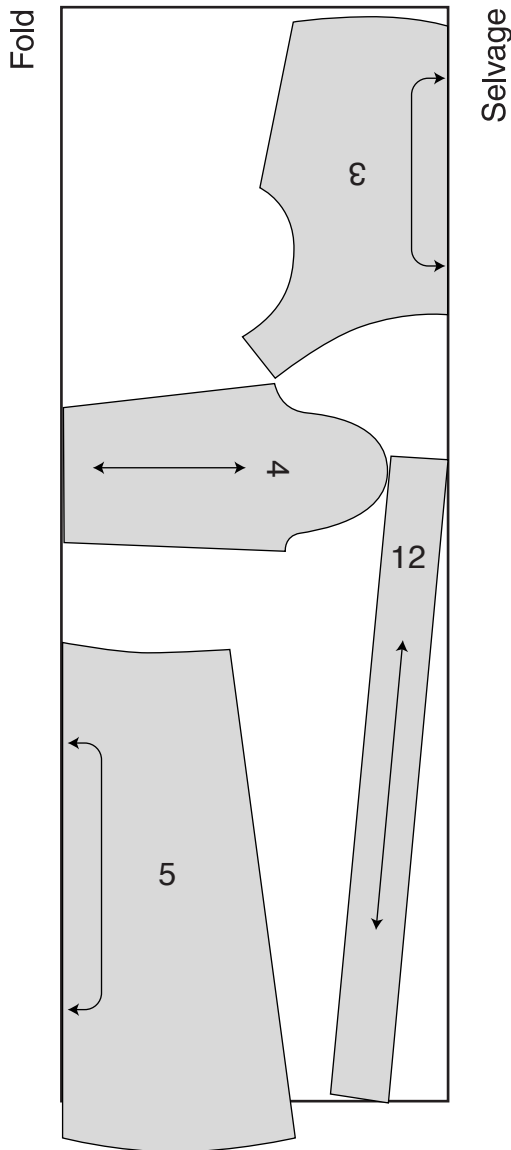


Activity 30

Pattern Layout Mistakes

It takes care and precision to lay out a pattern correctly. Remember that once you cut the fabric you can't undo an error.

Part I Directions: Study the pattern layout on the left below. Mark the mistakes with an X. Draw a corrected layout on the right.



Activity 30 *continued*

Part II Directions: Refer to the incorrect pattern layout in Part I to answer the following questions.

1. What would have happened if the fabric had been cut with those mistakes?

2. What markings helped you position the pattern pieces correctly? _____

3. Why do you think some people make mistakes when laying out a pattern? _____

4. What precautions can you take to make sure you do not make mistakes when laying out a pattern?
