

CONTENTS

About the Authors iv | Updates and Additions v | Learn, Practice, Assess vii |
Contents xv | Clinical Connections xx | Acknowledgments xxi |

FOUNDATIONS FOR SUCCESS XXIII

UNIT I LEVELS OF ORGANIZATION 1

CHAPTER 1 Introduction to Human Anatomy and Physiology 1



- 1.1 Introduction 3
 - 1.2 Anatomy and Physiology 4
 - 1.3 Levels of Organization 4
 - 1.4 Characteristics of Life 6
 - 1.5 Maintenance of Life 7
 - 1.6 Organization of the Human Body 12
 - 1.7 Life-Span Changes 20
 - 1.8 Anatomical Terminology 20
- Some Medical and Applied Sciences 24
- CHAPTER SUMMARY 26
CHAPTER ASSESSMENTS 28
INTEGRATIVE ASSESSMENTS/CRITICAL THINKING 29

REFERENCE PLATES 1–25

The Human Organism 30

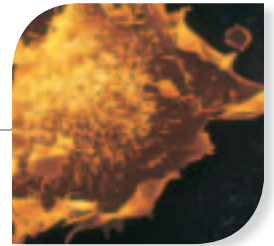
CHAPTER 2 Chemical Basis of Life 50



- 2.1 Introduction 51
- 2.2 Structure of Matter 51
- 2.3 Chemical Constituents of Cells 60

- CHAPTER SUMMARY 72
CHAPTER ASSESSMENTS 73
INTEGRATIVE ASSESSMENTS/CRITICAL THINKING 74

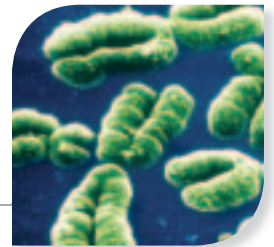
CHAPTER 3 Cells 75



- 3.1 Introduction 76
- 3.2 A Composite Cell 76
- 3.3 Movements Into and Out of the Cell 90
- 3.4 The Cell Cycle 100
- 3.5 Control of Cell Division 103
- 3.6 Stem and Progenitor Cells 105
- 3.7 Cell Death 106

- CHAPTER SUMMARY 109
CHAPTER ASSESSMENTS 111
INTEGRATIVE ASSESSMENTS/CRITICAL THINKING 113

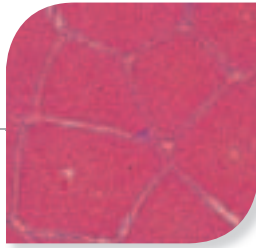
CHAPTER 4 Cellular Metabolism 114



- 4.1 Introduction 115
- 4.2 Metabolic Processes 115
- 4.3 Control of Metabolic Reactions 117
- 4.4 Energy for Metabolic Reactions 119
- 4.5 Cellular Respiration 120
- 4.6 Nucleic Acids and Protein Synthesis 124
- 4.7 Changes in Genetic Information 135

- CHAPTER SUMMARY 138
CHAPTER ASSESSMENTS 141
INTEGRATIVE ASSESSMENTS/CRITICAL THINKING 142

CHAPTER 5 Tissues 143

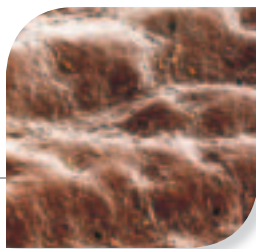


- 5.1 Introduction 144
- 5.2 Epithelial Tissues 144
- 5.3 Connective Tissues 152
- 5.4 Types of Membranes 163
- 5.5 Muscle Tissues 163
- 5.6 Nervous Tissues 164

CHAPTER SUMMARY 165
CHAPTER ASSESSMENTS 168
INTEGRATIVE ASSESSMENTS/CRITICAL THINKING 169

UNIT II SUPPORT AND MOVEMENT 170

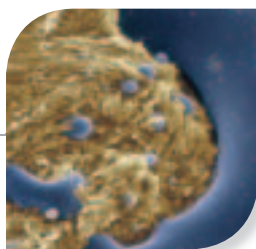
CHAPTER 6 Integumentary System 170



- 6.1 Introduction 171
- 6.2 Skin and Its Tissues 171
- 6.3 Accessory Structures of the Skin 177
- 6.4 Regulation of Body Temperature 181
- 6.5 Healing of Wounds and Burns 183
- 6.6 Life-Span Changes 186

INNERCONNECTIONS: INTEGUMENTARY SYSTEM 188
CHAPTER SUMMARY 189
CHAPTER ASSESSMENTS 190
INTEGRATIVE ASSESSMENTS/CRITICAL THINKING 191

CHAPTER 7 Skeletal System 192



- 7.1 Introduction 193
- 7.2 Bone Structure 193
- 7.3 Bone Development and Growth 197
- 7.4 Bone Function 202
- 7.5 Skeletal Organization 205
- 7.6 Skull 206
- 7.7 Vertebral Column 218
- 7.8 Thoracic Cage 222
- 7.9 Pectoral Girdle 225

- 7.10 Upper Limb 226
- 7.11 Pelvic Girdle 231
- 7.12 Lower Limb 234
- 7.13 Life-Span Changes 238

INNERCONNECTIONS: SKELETAL SYSTEM 239
CHAPTER SUMMARY 240
CHAPTER ASSESSMENTS 243
INTEGRATIVE ASSESSMENTS/CRITICAL THINKING 244

REFERENCE PLATES 26–54

Human Skull 245

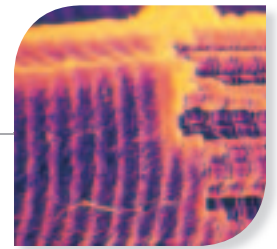
CHAPTER 8 Joints of the Skeletal System 260



- 8.1 Introduction 261
- 8.2 Classification of Joints 261
- 8.3 General Structure of a Synovial Joint 263
- 8.4 Types of Synovial Joints 265
- 8.5 Types of Joint Movements 267
- 8.6 Examples of Synovial Joints 271
- 8.7 Life-Span Changes 278

CHAPTER SUMMARY 281
CHAPTER ASSESSMENTS 282
INTEGRATIVE ASSESSMENTS/CRITICAL THINKING 283

CHAPTER 9 Muscular System 284



- 9.1 Introduction 285
- 9.2 Structure of a Skeletal Muscle 285
- 9.3 Skeletal Muscle Contraction 289
- 9.4 Muscular Responses 296
- 9.5 Smooth Muscles 300
- 9.6 Cardiac Muscle 301
- 9.7 Skeletal Muscle Actions 301
- 9.8 Major Skeletal Muscles 305
- 9.9 Life-Span Changes 334

INNERCONNECTIONS: MUSCULAR SYSTEM 333
CHAPTER SUMMARY 334
CHAPTER ASSESSMENTS 337
INTEGRATIVE ASSESSMENTS/CRITICAL THINKING 339

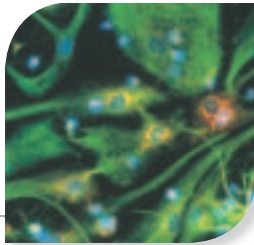
REFERENCE PLATES 55–75

Surface Anatomy and Cadaver Dissection 341

UNIT III INTEGRATION AND COORDINATION 353

CHAPTER **10**

Nervous System I: Basic Structure and Function 353

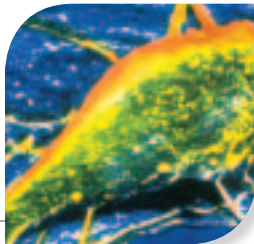


- 10.1 Introduction 354
- 10.2 General Functions of the Nervous System 355
- 10.3 Description of Cells of the Nervous System 356
- 10.4 Classification of Cells of the Nervous System 359
- 10.5 The Synapse 365
- 10.6 Cell Membrane Potential 365
- 10.7 Synaptic Transmission 371
- 10.8 Impulse Processing 374

CHAPTER SUMMARY 376
INNERCONNECTIONS: NERVOUS SYSTEM 378
CHAPTER ASSESSMENTS 380
INTEGRATIVE ASSESSMENTS/CRITICAL THINKING 381

CHAPTER **11**

Nervous System II: Divisions of the Nervous System 382

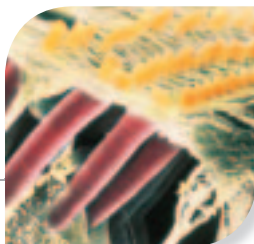


- 11.1 Introduction 384
- 11.2 Meninges 384
- 11.3 Ventricles and Cerebrospinal Fluid 385
- 11.4 Spinal Cord 387
- 11.5 Brain 397
- 11.6 Peripheral Nervous System 411
- 11.7 Autonomic Nervous System 424
- 11.8 Life-Span Changes 431

CHAPTER SUMMARY 432
CHAPTER ASSESSMENTS 434
INTEGRATIVE ASSESSMENTS/CRITICAL THINKING 436

CHAPTER **12**

Nervous System III: Senses 437



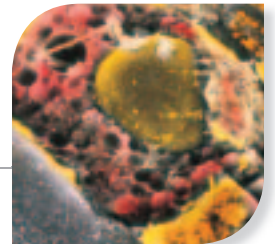
- 12.1 Introduction 438
- 12.2 Receptors, Sensation, and Perception 438

- 12.3 General Senses 440
- 12.4 Special Senses 446
- 12.5 Life-Span Changes 476

CHAPTER SUMMARY 477
CHAPTER ASSESSMENTS 480
INTEGRATIVE ASSESSMENTS/CRITICAL THINKING 481

CHAPTER **13**

Endocrine System 482



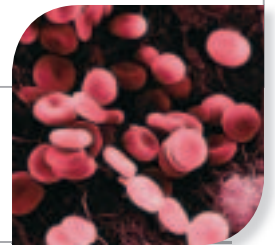
- 13.1 Introduction 483
- 13.2 General Characteristics of the Endocrine System 483
- 13.3 Hormone Action 484
- 13.4 Control of Hormonal Secretions 491
- 13.5 Pituitary Gland 492
- 13.6 Thyroid Gland 499
- 13.7 Parathyroid Glands 502
- 13.8 Adrenal Glands 504
- 13.9 Pancreas 509
- 13.10 Other Endocrine Glands 511
- 13.11 Stress and Its Effects 513
- 13.12 Life-Span Changes 515

INNERCONNECTIONS: ENDOCRINE SYSTEM 516
CHAPTER SUMMARY 517
CHAPTER ASSESSMENTS 519
INTEGRATIVE ASSESSMENTS/CRITICAL THINKING 520

UNIT IV TRANSPORT 522

CHAPTER **14**

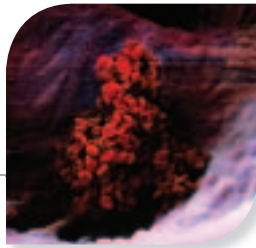
Blood 522



- 14.1 Introduction 523
- 14.2 Blood Cells 524
- 14.3 Blood Plasma 535
- 14.4 Hemostasis 538
- 14.5 Blood Groups and Transfusions 544

CHAPTER SUMMARY 548
CHAPTER ASSESSMENTS 550
INTEGRATIVE ASSESSMENTS/CRITICAL THINKING 551

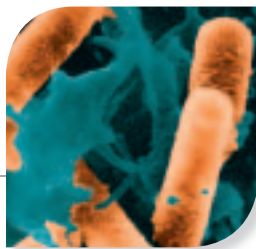
CHAPTER **15**
**Cardiovascular
System 552**



- 15.1 Introduction 553
- 15.2 Structure of the Heart 553
- 15.3 Heart Actions 564
- 15.4 Blood Vessels 573
- 15.5 Blood Pressure 580
- 15.6 Paths of Circulation 590
- 15.7 Arterial System 592
- 15.8 Venous System 600
- 15.9 Life-Span Changes 606

INNERCONNECTIONS: CARDIOVASCULAR SYSTEM 610
CHAPTER SUMMARY 611
CHAPTER ASSESSMENTS 614
INTEGRATIVE ASSESSMENTS/CRITICAL THINKING 615

CHAPTER **16**
**Lymphatic System and
Immunity 616**

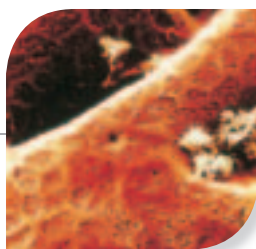


- 16.1 Introduction 617
- 16.2 Lymphatic Pathways 617
- 16.3 Tissue Fluid and Lymph 619
- 16.4 Lymph Movement 621
- 16.5 Lymph Nodes 621
- 16.6 Thymus and Spleen 623
- 16.7 Body Defenses Against Infection 625
- 16.8 Innate (Nonspecific) Defenses 626
- 16.9 Adaptive (Specific) Defenses or Immunity 628
- 16.10 Life-Span Changes 644

CHAPTER SUMMARY 644
INNERCONNECTIONS: LYMPHATIC SYSTEM 645
CHAPTER ASSESSMENTS 648
INTEGRATIVE ASSESSMENTS/CRITICAL THINKING 649

UNIT V
**ABSORPTION AND
EXCRETION 651**

CHAPTER **17**
Digestive System 651



- 17.1 Introduction 652
- 17.2 General Characteristics of the Alimentary Canal 652

- 17.3 Mouth 656
- 17.4 Salivary Glands 660
- 17.5 Pharynx and Esophagus 661
- 17.6 Stomach 665
- 17.7 Pancreas 671
- 17.8 Liver 673
- 17.9 Small Intestine 678
- 17.10 Large Intestine 686
- 17.11 Life-Span Changes 690

INNERCONNECTIONS: DIGESTIVE SYSTEM 692
CHAPTER SUMMARY 693
CHAPTER ASSESSMENTS 696
INTEGRATIVE ASSESSMENTS/CRITICAL THINKING 697

CHAPTER **18**
**Nutrition and
Metabolism 698**



- 18.1 Introduction 699
- 18.2 Carbohydrates 700
- 18.3 Lipids 702
- 18.4 Proteins 704
- 18.5 Energy Expenditures 706
- 18.6 Vitamins 709
- 18.7 Minerals 717
- 18.8 Healthy Eating 722
- 18.9 Life-Span Changes 728

CHAPTER SUMMARY 729
CHAPTER ASSESSMENTS 732
INTEGRATIVE ASSESSMENTS/CRITICAL THINKING 733

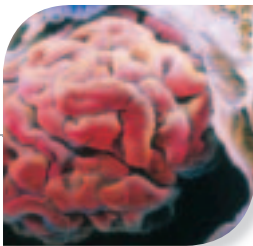
CHAPTER **19**
Respiratory System 735



- 19.1 Introduction 736
- 19.2 Why We Breathe 736
- 19.3 Organs of the Respiratory System 737
- 19.4 Breathing Mechanism 747
- 19.5 Control of Breathing 755
- 19.6 Alveolar Gas Exchanges 759
- 19.7 Gas Transport 762
- 19.8 Life-Span Changes 767

INNERCONNECTIONS: RESPIRATORY SYSTEM 768
CHAPTER SUMMARY 769
CHAPTER ASSESSMENTS 771
INTEGRATIVE ASSESSMENTS/CRITICAL THINKING 773

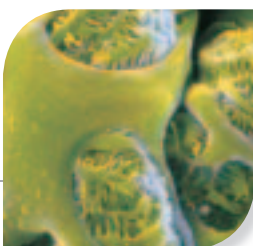
CHAPTER **20**
Urinary System 774



- 20.1 Introduction 775
- 20.2 Kidneys 776
- 20.3 Urine Formation 785
- 20.4 Elimination of Urine 798
- 20.5 Life-Span Changes 803

INNERCONNECTIONS: URINARY SYSTEM 804
CHAPTER SUMMARY 805
CHAPTER ASSESSMENTS 807
INTEGRATIVE ASSESSMENTS/CRITICAL THINKING 808

CHAPTER **21**
Water, Electrolyte, and Acid-Base Balance 810



- 21.1 Introduction 811
- 21.2 Distribution of Body Fluids 811
- 21.3 Water Balance 813
- 21.4 Electrolyte Balance 815
- 21.5 Acid-Base Balance 819
- 21.6 Acid-Base Imbalances 824

CHAPTER SUMMARY 826
CHAPTER ASSESSMENTS 828
INTEGRATIVE ASSESSMENTS/CRITICAL THINKING 829

UNIT VI **THE HUMAN LIFE CYCLE 830**

CHAPTER **22**
Reproductive Systems 830



- 22.1 Introduction 831
- 22.2 Organs of the Male Reproductive System 833
- 22.3 Hormonal Control of Male Reproductive Functions 845
- 22.4 Organs of the Female Reproductive System 846
- 22.5 Hormonal Control of Female Reproductive Functions 857
- 22.6 Mammary Glands 861
- 22.7 Birth Control 862
- 22.8 Sexually Transmitted Infections 867

INNERCONNECTIONS: REPRODUCTIVE SYSTEM 868
CHAPTER SUMMARY 869
CHAPTER ASSESSMENTS 873
INTEGRATIVE ASSESSMENTS/CRITICAL THINKING 874

CHAPTER **23**
Pregnancy, Growth, and Development 875



- 23.1 Introduction 876
- 23.2 Pregnancy 876
- 23.3 Prenatal Period 879
- 23.4 Postnatal Period 904
- 23.5 Aging 909

CHAPTER SUMMARY 911
CHAPTER ASSESSMENTS 914
INTEGRATIVE ASSESSMENTS/CRITICAL THINKING 915

CHAPTER **24**
Genetics and Genomics 916



- 24.1 Introduction 917
- 24.2 Modes of Inheritance 918
- 24.3 Factors That Affect Expression of Single Genes 924
- 24.4 Multifactorial Traits 924
- 24.5 Matters of Sex 927
- 24.6 Chromosome Disorders 929
- 24.7 Gene Expression Explains Aspects of Anatomy and Physiology 933

CHAPTER SUMMARY 935
CHAPTER ASSESSMENTS 936
INTEGRATIVE ASSESSMENTS/CRITICAL THINKING 937

- APPENDIX **A** Periodic Table of Elements 939
- APPENDIX **B** Laboratory Tests of Clinical Importance 940
- APPENDIX **C** Cellular Respiration 944
- APPENDIX **D** A Closer Look at DNA and RNA Structures 948

Glossary 951

Credits 977

Index 981